



*Atlantic*

 SWISS MADE WATCHES SINCE 1888 

**COLLECTION 2026**





# Welcome

## Collection 2026

Welcome to the Atlantic Watches Collection 2026, a reflection of enduring craftsmanship and the continuity of time. With every passing second, we carry forward more than a century of Swiss watchmaking heritage, creating timepieces defined by precision, elegance and lasting purpose.

This year's collection is inspired by the infinite nature of time itself. Each Atlantic watch expresses our commitment to harmonising tradition and modernity, resulting in designs that feel relevant today and enduring tomorrow. From refined classics to contemporary interpretations, every piece is shaped by a passion for clarity, balance and authenticity.

At the heart of Atlantic Watches stands a set of values that remain constant across generations.

### **Swiss Made Excellence**

Every timepiece is crafted with precision and reliability at its core, reflecting the highest standards of Swiss watchmaking.

### **Timeless Design**

From elegant heritage models to modern expressions, each watch is designed to remain relevant beyond passing trends.

### **A Legacy of Trust**

For generations, Atlantic watches have accompanied people through everyday life and defining moments alike.

### **Uncompromising Quality**

From movements to materials, every detail is carefully considered and executed with lasting durability in mind.

### **Accessible Luxury**

Authentic Swiss craftsmanship, offered with a clear focus on value and long term wearability.

The Atlantic Watches Collection 2026 brings these principles together in a carefully curated range of timepieces. Each model combines Swiss precision, functional excellence and enduring aesthetics, designed not only to measure time but to enrich it.

As you turn these pages, enter a world where tradition and innovation coexist with quiet confidence. Discover the infinity of time with Atlantic Watches, crafted to accompany every moment today and for years to come.





Cal. ATL-3

*Atlantic*

MADE IN SWITZERLAND  
SWISS MADE

# *History of Atlantic*

## **The Craft of Swiss Watchmaking**

Founded in 1888 in the village of Bettlach near Grenchen, Atlantic Watches traces its origins to the vision of Eduard Kummer, a master watchmaker shaped by the traditions of the Swiss Jura. Precision, discipline and craftsmanship defined his approach from the very beginning.

After refining his skills across the region, Kummer returned to Bettlach to establish his own workshop. Supported by the local community, the company grew steadily and by the end of the 19th century employed more than 700 people, becoming one of the most important watchmaking enterprises in the region.

### **From Expertise to Innovation**

Operating under the name EKB Eduard Kummer Bettlach, the company initially specialised in producing high quality components for respected manufacturers such as Longines and Certina. This formative period established a strong technical foundation and a culture of reliability that would later define Atlantic's own identity.

In 1932, Atlantic was introduced as a brand, marked by the sextant logo and early technical achievements including one of the first waterproof chronographs. Innovation remained central to the company's philosophy. In the 1960s, Atlantic introduced the Speed Switch, a rapid date change mechanism that allowed the date to be adjusted 52 times faster than conventional systems, reinforcing the brand's focus on practical progress and everyday usability.

### **Enduring Values, Timeless Design**

The Worldmaster collection stands as a defining expression of Atlantic's watchmaking philosophy. Known for its clarity, elegance and dependable precision, Worldmaster has evolved over decades while remaining true to its original character, earning its place among enduring Swiss classics.

Over time, Atlantic expanded its audience. While once associated with a more exclusive clientele, the brand today offers a wide range of high quality Swiss Made watches positioned in the mid price segment. Sporty, classic and elegant designs share a coherent aesthetic defined by balance, legibility and long term wearability.

### **Heritage Shaped by Responsibility**

Atlantic's heritage is also shaped by responsibility. In 1937, the introduction of paid vacation for employees reflected a forward looking approach to people and work that remains part of the brand's values today.

From a small workshop in Bettlach to an internationally respected watch brand, Atlantic's story is one of continuity, integrity and precision. Each timepiece carries this legacy forward, shaped by Swiss watchmaking craft and designed to endure.

*Hublot Horoway*  
177  
LIMITED EDITION



# *History of Atlantic* **The Milestones**

- 1888 Eduard Kummer establishes EKB to manufacture pocket watch components.
- 1925 Start of collaboration with ASUAG group for production of wristwatch parts.
- 1928 Introduction of wristwatches under the Ariston, Aristex, and Opus brands.
- 1930 Launch of the 'Atlantic' brand, pioneering in waterproof wristwatches.
- 1950 Opening of the first shop in Poland and other shops in Eastern Europe.
- 1952 Change of EKB company and other EKB-related brands to 'Atlantic Watch Ltd'.
- 1958 Successful launch of new markets in South America and the Middle East.
- 1960 Introduction of 'Speed-Switch' and other innovations, also sold to other watchmakers.
- 1965 Eastern Europe becomes a key area of the Atlantic Watch production.
- 1970 The legendary Beachboy model is born.
- 1988 Atlantic celebrates its 100 year anniversary.
- 2009 Start of collaboration with Polish rally legend Krzysztof Holowczyc as new Ambassador.
- 2013 Atlantic celebrates its 125 year anniversary with various limited edition models.
- 2015 Introduction of 'Worldmaster Open Heart' with a manufacture movement.
- 2018 Atlantic celebrates its 130 year anniversary with two limited editions.
- 2019 Launch of 'Moonphase' Automatic Chrono and limited edition 'Seaflight Skeleton'.
- 2020 Revival of the 'Beachboy' design from the 70's in a special edition.
- 2021 Relaunch of the 'Timeroy' collection in 70's retro-vintage design.
- 2022 Launch of the new mechanical manufacture calibres ATL-1 and ATL-2.
- 2023 Atlantic celebrates its 135 year anniversary with various limited editions.
- 2024 Launch of new colorful quartz models.
- 2025 Further engagement in the world of motor sports and launch of various limited editions.



# *Atlantic Collection 2026*

## **Table of Contents**

Worldmaster Moonphase Chronograph Limited Edition	10
Worldmaster Prestige "Krzysztof Holowczyc" Limited Edition	12
Worldmaster Prestige Valjoux Limited Edition	14
Worldmaster Prestige Valjoux Collection	16
Worldmaster Manufacture Calibre ATL-3 & ATL-1 Limited Edition	18
Worldmaster Manufacture Calibre ATL-2 Collection	22
Worldmaster BicompaX Legend Edition	24
Worldmaster Heritage Regulator	26
Worldmaster Open Heart Limited Edition	28
Worldmaster COSC Collection	30
Worldmaster Pointer Date	32
Worldmaster Nightsky Moonphase & Green Aventurine Collection	34
Worldmaster 1888 Automatic & Vintage Collection	38
Worldmaster Original Heritage Small Second	44
Worldmaster Original Power Reserve, Automatic & Mechanical Collection	46
Worldmaster Art Deco	50
Mariner Automatic, Quartz & GMT Collection	54
Grand Prix Desert Racer VBA 442 Limited Edition & Grand Prix Quartz Collection	58
Seawave 40mm Classic, 40mm Chrono & 35mm Ladies' Collection	62
SeacLOUD Diver & Classic Collection	68
Timeroy Revival Edition	74
Seaflight Gents Collection	78
Seasport Quartz Gents	80
Seasport Moonphase & Small Second	84
Seacrest Collection	88
Seahunter Quartz Gents	90
Seapair Gents & Ladies Collection	92
Seabase Quartz Chrono & Classic Collection	96
Sealine Quartz Chrono	106
Super De Luxe Diamonds & Precious Stones Edition	108
Elegance Royal Diamonds & Rubies Collection	114
Elegance Belle	118
Elegance Nightsky Moonphase with Aventurine Dial	120
Elegance Classic & Romantic Collection	122
Elegance Moonphase	126
Seagold Collection	128

*Atlantic Collection 2026*  
**Worldmaster Automatic  
Limited Moonphase Edition**



<b>Movement</b>	Automatic chronograph with moonphase complication ETA Valjoux 7751 with yellow gold PVD coated balance wheel Power reserve: 48h
<b>Case Material</b>	Stainless steel Stainless steel with yellow gold PVD 2N coating
<b>Bracelet</b>	Genuine calf leather strap with butterfly clasp: 21mm
<b>Crystal</b>	Double curved sapphire crystal with 5 layers of AR-coating
<b>Water Resistance</b>	50 meters - 5 bar
<b>Dial</b>	Hand applied numerals Original vintage Atlantic logo Moonphase indicator
<b>Size</b>	Case diameter: 42mm Case thickness: 15.5mm
<b>Special Features</b>	Limited edition of 88 pieces of each dial version Number plate on the side of the case Transparent caseback



52851.41.55GM



52851.45.25

## *Celestial Craftsmanship*

Powered by the ETA Valjoux 7751, this limited edition model pairs a refined moonphase complication with mechanical reliability and timeless Swiss design.



*Atlantic Collection 2026*  
**Worldmaster Prestige  
Krzysztof Hołowczyc Limited Edition**



<b>Movement</b>	Automatic Chronograph ETA Valjoux 7750 Power reserve: 48h
<b>Case Material</b>	Stainless steel with black PVD coating
<b>Bracelet</b>	Genuine calf leather racing strap in black with folding butterfly clasp Additional calf leather racing strap in brown with pin buckle Both straps with quick-release system for ease of change
<b>Crystal</b>	Double curved sapphire crystal with double-sided AR-coating
<b>Water Resistance</b>	50 meters - 5 bar
<b>Dial</b>	Large golden numerals and golden hands Original vintage Atlantic logo Signature of Krzysztof Hołowczyc
<b>Size</b>	Case diameter: 42mm Case thickness: 15.5mm
<b>Special Features</b>	Limited edition of 177 pieces Number plate on the side of the case Transparent caseback Special presentation box Two different straps with quick release pin



55853.46.95

## *Driven by Precision*

Created in collaboration with Krzysztof Hołowczyc, this limited edition of 177 pieces reflects a career defined by precision, resilience and uncompromising performance.



*Atlantic Collection 2026*  
**Worldmaster Prestige  
Limited Edition 2026**



<b>Movement</b>	Automatic chronograph: ETA Valjoux 7750 with yellow gold PVD balance Power reserve: 48h
<b>Case Material</b>	Polished stainless steel with yellow gold PVD coating
<b>Bracelet</b>	Genuine calf leather strap with butterfly case material
<b>Crystal</b>	Domed sapphire crystal with double-sided AR-coating
<b>Water Resistance</b>	50 meters - 5 bar
<b>Dial</b>	Golden numerals Original vintage Atlantic logo Day-date display
<b>Size</b>	Case diameter: 42mm Case thickness: 15.5mm
<b>Special Features</b>	Limited edition of 88 pieces Number plate on the side of the case Transparent caseback Special presentation box



55853.45.35

## *Golden Balance*

Limited to just 88 pieces, this Worldmaster Prestige expresses refined luxury through warm golden accents and a design created for collectors who value rarity, elegance and lasting presence.



*Atlantic Collection 2026*  
**Worldmaster Prestige  
Valjoux Collection**



<b>Movement</b>	Automatic chronograph: ETA Valjoux 7750 Power reserve: 48h
<b>Case Material</b>	Stainless steel Stainless steel with black PVD coating
<b>Bracelet</b>	Black resp. brown calf leather strap in vintage racing style with butterfly clasp in case material
<b>Crystal</b>	Domed sapphire crystal with double-sided AR-coating
<b>Water Resistance</b>	50 meters - 5 bar
<b>Dial</b>	Numerals with Super-LumiNova Original vintage Atlantic logo Day-date display Available in black or cream
<b>Size</b>	Case diameter: 42mm Case thickness: 15.5mm
<b>Special Features</b>	Transparent caseback



55853.41.95



55853.46.65

## *The Pinnacle of Swiss Craftsmanship*

Driven by the legendary ETA Valjoux 7750, this exceptional model embodies Swiss precision and artistry, setting a new standard for reliability and performance.



*Atlantic Collection 2026*  
**Worldmaster Manufacture Calibre ATL-3  
Limited Anniversary Edition**



<b>Movement</b>	Mechanical manufacture calibre ATL-3 with small second at 9 o'clock Power reserve: 53h
<b>Case Material</b>	Stainless steel
<b>Bracelet</b>	Genuine calf leather strap with butterfly clasp: 21mm Additional light beige calf leather strap with buckle pin Featuring the Atlantic quick release pin for easy change of straps
<b>Crystal</b>	Double curved sapphire crystal with double-sided AR-coating
<b>Water Resistance</b>	50 meters - 5 bar
<b>Dial</b>	Large luminous numerals Original vintage Atlantic logo Small second indicator
<b>Size</b>	Case diameter: 42mm Case thickness: 11.9mm
<b>Special Features</b>	Limited edition of 135 pieces Number plate on the side of the case Full size transparent caseback Special presentation box Two different straps with quick release pin Mechanical/handwinding manufacture calibre



52953.41.43

## *Celebrating Tradition and Legacy*

Celebrating 135 years of excellence, this Limited Edition is powered by our ATL-3 calibre with a swan-neck fine adjustment, reflecting the highest standards of refined mechanical watchmaking.



*Atlantic Collection 2026*  
**Worldmaster Manufacture Calibre ATL-1  
Limited Edition**



<b>Movement</b>	Mechanical manufacture calibre ATL-1 with small second at 6 o'clock Power reserve: 53h
<b>Case Material</b>	Stainless steel with black PVD-coating
<b>Bracelet</b>	Genuine calf leather strap with butterfly clasp: 21mm Hand made genuine calf leather strap with pin buckle: 21mm Featuring the Atlantic quick release pin for easy change of straps
<b>Crystal</b>	Double curved sapphire crystal with double-sided AR-coating
<b>Water Resistance</b>	50 meters - 5 bar
<b>Dial</b>	Hand applied numerals in rose gold Original vintage Atlantic logo Small second indicator
<b>Size</b>	Case diameter: 42mm Case thickness: 11.9mm
<b>Special Features</b>	Limited edition of 188 pieces Number plate on the side of the case Full size transparent caseback Special presentation box Two different straps with quick release pin Mechanical/handwinding manufacture calibre



52952.46.63R  
with black leather strap



52952.46.63R  
with second leather strap

## *Masterful Craftsmanship in Horology*

This Limited Edition reveals our ATL-1 calibre, adapted to our own specifications and finished in yellow gold PVD on full display through the transparent caseback.



*Atlantic Collection 2026*  
**Worldmaster Manufacture Calibre ATL-2  
Mechanical Collection**



<b>Movement</b>	Mechanical manufacture calibre ATL-2 with small second at 6 o'clock Power reserve: 53h
<b>Case Material</b>	Stainless steel
<b>Bracelet</b>	Genuine calf leather strap with butterfly clasp: 21mm
<b>Crystal</b>	Double curved sapphire crystal with double-sided AR-coating
<b>Water Resistance</b>	50 meters - 5 bar
<b>Dial</b>	Numerals in Super-LumiNova Original vintage Atlantic logo Small second indicator Available in black, green and off-white
<b>Size</b>	Case diameter: 42mm Case thickness: 11.9mm
<b>Special Features</b>	Full size transparent caseback Mechanical/handwinding manufacture calibre



52952.41.63



52952.41.73



52952.41.93

## *Mechanical Manufacture Calibre*

The hand-wound ATL-2 calibre, adapted to our own specifications, stands as a refined expression of traditional mechanical watchmaking at its finest.



# Atlantic Collection 2026

## Worldmaster Bicompax Legend Edition



<b>Movement</b>	Automatic bicompax: Sellita SW510-BHa Power reserve: 56-62h
<b>Case Material</b>	Stainless steel
<b>Bracelet</b>	Genuine calf leather strap with butterfly clasp Integrated stainless steel bracelet with butterfly clasp
<b>Crystal</b>	Domed sapphire crystal with anti-reflection coating
<b>Water Resistance</b>	50 meter - 5 bar
<b>Dial</b>	Original vintage Atlantic logo Bicompax dial with large numerals and date display
<b>Size</b>	Case diameter: 42mm Case thickness: 15.4mm
<b>Special Features</b>	Transparent caseback



52852.41.23



52852.41.53



52852.41.63



52857.41.23



52857.41.53



52857.41.63



*Atlantic Collection 2026*  
**Worldmaster  
Regulator**



<b>Movement</b>	Automatic regulator: Sellita SW266-1 Power reserve: 38-41h
<b>Case Material</b>	Stainless steel
<b>Bracelet</b>	Genuine calf leather strap in black resp. gray with butterfly clasp: 22mm Featuring the Atlantic quick release pin for easy change of straps Integrated stainless steel bracelet with butterfly clasp: 22mm
<b>Crystal</b>	Sapphire crystal
<b>Water Resistance</b>	50 meter - 5 bar
<b>Dial</b>	Original vintage Atlantic logo Regulator dial with separate hour, minute and second display
<b>Size</b>	Case diameter: 42mm Case thickness: 12.3mm
<b>Special Features</b>	Regulator complication with separate hour, minute and second display Transparent caseback Special presentation box Leather models delivered with two different straps



53781.41.43



53781.41.63



53786.41.43



53786.41.63



*Atlantic Collection 2026*  
**Worldmaster 1888**  
**Open Heart Limited Edition**



<b>Movement</b>	Automatic: Sellita SW200-1/OH Power reserve: 41h
<b>Case Material</b>	Stainless steel
<b>Bracelet</b>	Genuine calf leather strap with butterfly clasp: 20mm
<b>Crystal</b>	Sapphire crystal
<b>Water Resistance</b>	50 meters - 5 bar
<b>Dial</b>	Open heart at 12 o'clock
<b>Size</b>	Case diameter: 42mm Case thickness: 10.3mm
<b>Special Features</b>	Limited Edition of 888 pieces Open Heart at 12 o'clock Transparent caseback



52780.41.21R



52780.41.51



52780.41.81R



52780.41.21G



52780.41.51R



52780.41.41R

*Atlantic Collection 2026*  
**Worldmaster 1888**  
**COSC Chronometer Edition**



<b>Movement</b>	Automatic: Sellita SW200-1/COSC Power reserve: 38-41h
<b>Case Material</b>	Stainless steel
<b>Bracelet</b>	Genuine calf leather strap with butterfly clasp: 20mm
<b>Crystal</b>	Sapphire crystal
<b>Water Resistance</b>	50 meters - 5 bar
<b>Dial</b>	Date display Luminous hands and red tip on second hand Luminous indices at 12h, 3h, 6h, 9h
<b>Size</b>	Case diameter: 42mm Case thickness: 10.3mm
<b>Special Features</b>	Chronometer certificate by COSC Transparent caseback



52781.41.21



52781.41.51



52781.41.61

## *Certified Reliability and Precision*

The Worldmaster COSC Collection combines exceptional accuracy, timeless style and exquisite craftsmanship - a true testament to Swiss excellence.



*Atlantic Collection 2026*  
**Worldmaster Automatic  
Pointer Date**



<b>Movement</b>	Automatic Pointer Date: Sellita SW221-1 Power reserve: 38-41h
<b>Case Material</b>	Stainless steel Stainless steel with rose gold PVD coating Stainless steel with black PVD coating
<b>Bracelet</b>	Genuine calf leather strap
<b>Crystal</b>	Sapphire crystal with anti-reflection coating
<b>Water Resistance</b>	50 meters - 5 bar
<b>Dial</b>	Large hand applied numerals Original vintage Atlantic logo Date circle Date pointer hand with red tip
<b>Size</b>	Case diameter: 40mm Case thickness: 12mm
<b>Special Features</b>	Transparent caseback Pointer date complication



52782.41.63GN



52782.41.93



52782.44.63



52782.46.63



*Atlantic Collection 2026*  
**Worldmaster Nightsky  
Aventurine Dial with Moonphase**



<b>Movement</b>	Automatic Moonphase: Sellita SW 280-1 Power reserve: 38-41h
<b>Case Material</b>	Stainless steel Stainless steel with rose gold PVD coating Stainless steel with yellow gold PVD coating
<b>Bracelet</b>	Blue calf leather strap with butterfly clasp Integrated stainless steel bracelet
<b>Crystal</b>	Sapphire crystal with double-sided AR-coating
<b>Water Resistance</b>	50 meters - 5 bar
<b>Dial</b>	Aventurine stone dial Moonphase indication Hand applied indices Date display
<b>Size</b>	Case diameter: 42mm Case thickness: 10.9mm
<b>Special Features</b>	Aventurine stone dial with moonphase complication Transparent caseback



52783.41.91



52788.41.91



52783.44.91



52783.45.91



52788.45.91

*Atlantic Collection 2026*  
**Worldmaster Moonphase  
Green Aventurine**



<b>Movement</b>	Automatic Moonphase: Sellita SW 280-1 Power reserve: 38-41h
<b>Case Material</b>	Stainless steel
<b>Bracelet</b>	Integrated stainless steel bracelet Brown calf leather strap with butterfly clasp
<b>Crystal</b>	Sapphire crystal with double-sided AR-coating
<b>Water Resistance</b>	50 meters - 5 bar
<b>Dial</b>	Aventurine stone dial in green Moonphase indication Hand applied indices Date display
<b>Size</b>	Case diameter: 42mm Case thickness: 10.9mm
<b>Special Features</b>	Green Aventurine stone dial with moonphase complication Transparent caseback



52783.41.71



52788.41.71

## *The Quiet Radiance of Time*

With its deep green aventurine dial and refined moonphase complication, this Worldmaster expresses time with warmth and depth, defined by subtle natural shimmer and balanced design.



*Atlantic Collection 2026*  
**Worldmaster 1888**  
**Automatic Collection**



<b>Movement</b>	Automatic: Sellita SW200-1 Automatic Moonphase: Sellita SW280-1 Power reserve: 38-41h
<b>Case Material</b>	Stainless steel Stainless steel with rose gold PVD coating
<b>Bracelet</b>	Genuine calf leather strap with butterfly clasp: 20mm Stainless steel bracelet: 20mm
<b>Crystal</b>	Sapphire crystal
<b>Water Resistance</b>	50 meters - 5 bar
<b>Dial</b>	Date display at 3 o'clock Hand applied indices
<b>Size</b>	Case diameter: 42mm Case thickness classic: 10mm Case thickness moonphase: 10.9mm
<b>Special Features</b>	Transparent caseback Ref. 52783.41.51 & 52788.41.51 with moonphase complication



52759.41.21S



52759.41.51S



52759.41.61S



52759.41.51SM



52759.41.61SM



Atlantic  
SINCE 1888

18

WORLDMASTER  
AUTOMATIC



52759.41.41S



52759.41.41SM



52759.44.51



52783.41.51



52788.41.51

*Atlantic Collection 2026*  
**Worldmaster 1888  
Vintage Collection**



<b>Movement</b>	Automatic: Sellita SW200-1 Power reserve: 38-41h
<b>Case Material</b>	Stainless steel
<b>Bracelet</b>	Genuine calf leather strap with butterfly clasp
<b>Crystal</b>	Sapphire crystal
<b>Water Resistance</b>	50 meters - 5 bar
<b>Dial</b>	Original vintage Atlantic logo Date display Hand applied indices and numbers
<b>Size</b>	Case diameter: 40mm Case thickness: 11.5mm
<b>Special Features</b>	Transparent caseback



55750.41.55S



55750.41.95S



55750.41.25R



55750.41.55R



55750.41.65R



*Atlantic Collection 2026*  
**Worldmaster Original  
Heritage Small Second**



<b>Movement</b>	Automatic small second: Sellita SW261-1 Power reserve: 38-41h
<b>Case Material</b>	Stainless steel
<b>Bracelet</b>	Genuine calf leather strap with butterfly clasp: 22mm Rubberised genuine calf leather strap with pin buckle: 22mm Each strap with quick release pin for easy change of straps
<b>Crystal</b>	Domed sapphire crystal Ten layers of antireflection coating
<b>Water Resistance</b>	50 meters - 5 bar
<b>Dial</b>	Original vintage Atlantic Logo Small second at 6 o'clock Luminous hands and numerals
<b>Size</b>	Case diameter: 42mm Case thickness: 12.1mm
<b>Special Features</b>	Transparent caseback Special presentation box Two different straps with quick release pin



53760.41.53



53760.41.63



53760.41.73

## *Inspiration from the Past*

The Atlantic Worldmaster Original Heritage 1951 is a tribute to the design of the iconic 40's model and comes in a striking retro look.



*Atlantic Collection 2026*  
**Worldmaster Original  
Power Reserve**



<b>Movement</b>	Automatic with small second and power reserve indicator: Sellita SW279-1 Power reserve: 45h
<b>Case Material</b>	Polished stainless steel
<b>Bracelet</b>	Genuine calf leather strap
<b>Crystal</b>	Domed sapphire crystal
<b>Water Resistance</b>	50 meters - 5 bar
<b>Dial</b>	Hand applied numerals Original vintage Atlantic Logo Small second at 9 o'clock Power reserve indicator with red hand
<b>Size</b>	Case diameter: 39mm Case thickness: 12.4mm
<b>Special Features</b>	Original retro Atlantic look of the 50's Vintage Atlantic logo Transparent caseback Small second and power reserve indicator



53782.41.13



53782.41.23



53782.41.93RB

## *A Stunning Masterpiece*

Experience the perfect marriage of retro charm and modern horology with the Atlantic Worldmaster Original Power Reserve Watch.



*Atlantic Collection 2026*  
**Worldmaster Original  
Mechanical & Automatic Models**



<b>Movement</b>	Handwinding: Sellita SW210-1a Power reserve: 45h Automatic: Sellita SW200-1 Power reserve: 38-41h
<b>Case Material</b>	Stainless steel
<b>Bracelet</b>	Genuine calf leather strap with buckle pin: 22mm
<b>Crystal</b>	Domed sapphire crystal
<b>Water Resistance</b>	50 meters - 5 bar
<b>Dial</b>	Hand applied numerals Original vintage Atlantic Logo
<b>Size</b>	Case diameter: 39mm Case thickness: 11.8mm
<b>Special Features</b>	Original retro Atlantic look of the 50's Transparent caseback



53680.41.13 | Handwinding



53680.41.23 | Handwinding



53680.41.93 | Handwinding



53780.41.39BK | Automatic



53780.41.43R | Automatic



53780.41.53G | Automatic

*Atlantic Collection 2026*  
**Worldmaster Art Deco  
Automatic & Mechanical Models**



<b>Movement</b>	Handwinding: Sellita SW210-1a Power reserve: 45h Automatic: Sellita SW200-1 Power reserve: 38-41h
<b>Case Material</b>	Stainless steel Stainless steel with yellow gold PVD coating
<b>Bracelet</b>	Genuine calf leather strap: 20mm Stainless steel bracelet: 20mm Stainless steel bracelet with yellow gold PVD coating: 20mm
<b>Crystal</b>	Domed sapphire crystal
<b>Water Resistance</b>	50 meters - 5 bar
<b>Dial</b>	Hand applied indices and numerals Date at 3 o'clock Original Atlantic 1955 style
<b>Size</b>	Case diameter: 40mm Case thickness: 11.15mm
<b>Special Features</b>	Screw-in, transparent caseback Ref. 51651 & 51752 with red tip on second hand



51752.41.25S | Automatic



51752.41.25G | Automatic  
51651.41.25G | Handwinding



51752.41.65S | Automatic



51752.41.65G | Automatic  
51651.41.65G | Handwinding



51752.41.25SM | Automatic



51752.41.65SM | Automatic



51752.45.25G | Automatic  
51651.45.25G | Handwinding



51752.45.35G | Automatic  
51651.45.35G | Handwinding



51752.45.65G | Automatic





51752.41.25R | Automatic



51752.41.55S | Automatic



51752.41.49R | Automatic



51752.45.39G | Automatic



51752.45.69G | Automatic



51752.45.99G | Automatic



51752.45.39GM | Automatic



51752.45.69GM | Automatic



51752.45.99GM | Automatic

# Atlantic Collection 2026

## Mariner Wave Automatic Collection



<b>Movement</b>	Automatic: Sellita SW 200-1 Power reserve: 38-41h
<b>Case Material</b>	Stainless steel Stainless steel case with rose gold PVD coated bezel accents and crown
<b>Caseback</b>	Transparent caseback
<b>Bracelet</b>	Stainless steel bracelet Stainless steel bracelet in two tone with rose gold PVD coating High resistance PU strap
<b>Crystal</b>	Sapphire crystal
<b>Water Resistance</b>	200 meters - 20 bar
<b>Dial</b>	Wave design in 3D Luminous hands and indices
<b>Size</b>	Case diameter: 42mm Case thickness: 13mm
<b>Special Features</b>	Sporty diving watch Screw-in crown Turning bezel



81776.41.59



81776.41.69



81776.41.79



81776.43.69R



81771.41.69PU



81771.43.69RPU

*Atlantic Collection 2026*  
**Mariner Wave  
Quartz Classic & GMT Collection**



<b>Movement</b>	Quartz gents: Ronda 515 Quartz GMT: Ronda 515-24H
<b>Case Material</b>	Stainless steel Stainless steel case with rose gold PVD coated bezel accents and crown
<b>Bracelet</b>	Stainless steel bracelet Stainless steel bracelet in two tone with rose gold PVD coating High resistance PU strap
<b>Crystal</b>	Sapphire crystal
<b>Water Resistance</b>	200 meters - 20 bar
<b>Dial</b>	Wave design in 3D Luminous hands and indices
<b>Size</b>	Case diameter: 42mm Case thickness: 12.3mm
<b>Special Features</b>	Sporty diving watch Screw-in crown Turning bezel GMT models with turning 24h GMT bezel and red GMT hand



81376.41.59



81376.41.69



81376.41.79



81376.43.69R



81371.41.69PU



81371.43.69RPU



81576.41.59GMT



81576.41.79GMT

*Atlantic Collection 2026*  
**Grand Prix Desert Racer**  
**Adrien Van Beveren VBA442 Limited Edition**



<b>Movement</b>	Quartz gents: Ronda R8040B
<b>Case Material</b>	Stainless steel with black PVD coating
<b>Bracelet</b>	Genuine calf leather racing strap in black with butterfly clasp Second leather strap in desert beige with quick release for easy change
<b>Crystal</b>	Sapphire crystal
<b>Water Resistance</b>	100 meters - 10 bar
<b>Dial</b>	Bronze Desert Racer VBA 442 chronograph dial Sand colored indices and numerals
<b>Size</b>	Case diameter: 44mm Case thickness: 13.5mm
<b>Special Features</b>	Limited to 442 pces. Second leather strap in desert beige with quick release for easy change Special Racing Box Limited Edition Certificate



55463.46.45

## *Precision shaped by the desert*

Inspired by endurance and discipline, the Desert Racer VBA 442 captures the spirit of desert racing through a purposeful dial design and precise Swiss chronograph craftsmanship.



*Atlantic Collection 2026*  
**Grand Prix  
Quartz Collection**



<b>Movement</b>	Quartz gents: Ronda R8040B
<b>Case Material</b>	Stainless steel
<b>Bracelet</b>	Stainless steel bracelet Carbon Leather with Red Stitching
<b>Crystal</b>	Sapphire crystal
<b>Water Resistance</b>	100 meters - 10 bar
<b>Dial</b>	Red accents Luminous hands and indices
<b>Size</b>	Case diameter: 44mm Case thickness: 13.5mm
<b>Special Features</b>	Chronograph pusher in red



55463.41.25



55463.41.45



55463.41.65



55468.41.45



55468.41.65

*Atlantic Collection 2026*  
**Seawave Quartz**  
**40mm Classic & Chronograph**



<b>Movement</b>	Quartz chronograph: Ronda Z50 Quartz classic: Ronda 515
<b>Case Material</b>	Stainless steel Stainless steel with yellow gold PVD coating
<b>Bracelet</b>	Stainless steel bracelet Stainless steel bracelet with yellow gold PVD coating
<b>Crystal</b>	Sapphire crystal
<b>Water Resistance</b>	100 meters - 10 bar
<b>Dial</b>	Date display Luminous hands and indices
<b>Size</b>	Case diameter: 40mm Case thickness classic: 9mm Case thickness chrono: 10.9mm
<b>Special Features</b>	Revival model inspired by the iconic 1984 'Midas Marin.'



58366.41.21



58366.41.51



58366.41.61



58366.41.91



58366.45.21



58366.45.31





58466.41.21



58466.41.51



58466.41.61



58466.41.71



58466.45.61

*Atlantic Collection 2026*  
**Seawave Quartz**  
**35mm Ladies Collection**



<b>Movement</b>	Quartz: Ronda 505
<b>Case Material</b>	Stainless steel Stainless steel with yellow gold PVD coating
<b>Bracelet</b>	Stainless steel bracelet Stainless steel bracelet with yellow gold PVD coating
<b>Crystal</b>	Flat sapphire crystal
<b>Water Resistance</b>	100 meters - 10 bar
<b>Dial</b>	5 models with colourful sun ray dials with Swarovski stones 2 models with mother-of-pearl dials with Swarovski stones
<b>Size</b>	Case diameter: 35mm
<b>Special Features</b>	Smaller version of the revival model inspired by the iconic 'Midas Marin.'



39365.41.21



39365.41.51



39365.41.71



39365.41.91



39365.41.01R



39365.45.01



39365.45.31

*Atlantic Collection 2026*  
**Seacloud  
Diver Collection**



<b>Movement</b>	Quartz gents: Ronda 505
<b>Case Material</b>	Stainless steel
<b>Bracelet</b>	Stainless steel bracelet Genuine calf leather strap
<b>Crystal</b>	Sapphire crystal
<b>Water Resistance</b>	200 meters - 20 bar
<b>Dial</b>	Internal turning bezel Luminous hands and indices
<b>Size</b>	Case diameter: 40.5mm Case thickness: 10.8mm
<b>Special Features</b>	Sporty diving watch Screw-in crown



73370.41.21



73370.41.61



73375.41.21



73375.41.51



73375.41.61

*Atlantic Collection 2026*  
**Seacloud  
Classic Collection**



<b>Movement</b>	Quartz gents: Ronda 505
<b>Case Material</b>	Stainless steel
<b>Bracelet</b>	Stainless steel bracelet Genuine calf leather strap
<b>Crystal</b>	Sapphire crystal
<b>Water Resistance</b>	100 meters - 10 bar
<b>Dial</b>	Date display at 6 o'clock Luminous hands and indices
<b>Size</b>	Case diameter: 40.5mm Case thickness: 10.8mm
<b>Special Features</b>	Minimalistic, sporty and versatile look



73361.41.21



73361.41.51



73361.41.61



73361.41.71



73361.41.91





73366.41.21



73366.41.51



73366.41.61



73366.41.71



73366.41.91

# Atlantic Collection 2026

## Timeroy Revival Edition



<b>Movement</b>	Quartz chronograph: Ronda 5021.D Quartz gents: Ronda 515
<b>Case Material</b>	Stainless steel Stainless steel with yellow gold PVD coating
<b>Bracelet</b>	Stainless steel bracelet: 20mm Stainless steel bracelet with yellow gold PVD coating: 20mm Genuine calf leather strap in vintage-retro look: 20mm
<b>Crystal</b>	Sapphire crystal
<b>Water Resistance</b>	100 meters - 10 bar
<b>Dial</b>	Date display Luminous hands and indices
<b>Size</b>	Case diameter: 42mm Case thickness: 11.1mm
<b>Special Features</b>	Original retro Atlantic look of the 70's



70362.41.59



70362.41.69



70462.41.69



70467.41.59



70467.41.69



70467.45.39





70362.41.55



70362.41.65



70462.41.65



70467.41.55



70467.45.35

*Atlantic Collection 2026*  
**Seaflight  
Quartz Collection**



<b>Movement</b>	Quartz: Ronda 715
<b>Case Material</b>	Stainless steel
<b>Bracelet</b>	Stainless steel bracelet: 22mm Genuine calf leather strap: 22mm
<b>Crystal</b>	Sapphire crystal
<b>Water Resistance</b>	50 meters - 5 bar
<b>Dial</b>	Date display Hand applied indices
<b>Size</b>	Case diameter: 44mm Case thickness: 11.5mm
<b>Special Features</b>	Brushed stainless steel Sporty and robust look



70351.41.41R



70356.41.41R



70351.41.55



70351.41.65



70356.41.55



70356.41.65

*Atlantic Collection 2026*  
**Seasport  
Quartz Chrono Collection**



<b>Movement</b>	Quartz chronograph: ETA G10.212
<b>Case Material</b>	Stainless steel Stainless steel with rose gold PVD coating Stainless steel with anthracite PVD coating
<b>Bracelet</b>	Stainless steel bracelet: 23mm Stainless steel bracelet with rose gold PVD coating: 23mm Stainless steel bracelet with anthracite PVD coating: 23mm Genuine calf leather strap: 23mm
<b>Crystal</b>	Domed sapphire crystal
<b>Water Resistance</b>	100 meters - 10 bar
<b>Dial</b>	Date display Luminous hands and indices
<b>Size</b>	Case diameter: 46mm Case thickness: 13.9mm
<b>Special Features</b>	Brushed and polished look Sporty design



87461.42.21



87466.42.21



87461.42.41



87466.42.41



87461.47.51



87466.47.51





87461.42.45



87466.42.45



87466.46.45



87461.47.55



87466.47.55



87461.44.55



87466.44.55

*Atlantic Collection 2026*  
**Seaport  
Moonphase Edition**



<b>Movement</b>	Quartz moonphase: Ronda 706
<b>Case Material</b>	Stainless steel Stainless steel with yellow gold PVD coating
<b>Bracelet</b>	Stainless steel bracelet with yellow gold PVD coating: 21mm Genuine calf leather strap: 21mm
<b>Crystal</b>	Domed sapphire crystal
<b>Water Resistance</b>	50 meters - 5 bar
<b>Dial</b>	Moonphase indicator Hand applied indices
<b>Size</b>	Case diameter: 41mm Case thickness: 10.8mm
<b>Special Features</b>	Moonphase function



56550.41.21



56550.41.51



56550.41.61



56555.41.51



56550.45.21



56555.45.21



# Atlantic Collection 2026

## Seaport Small Second



<b>Movement</b>	Quartz small second: Ronda 6004.D
<b>Case Material</b>	Stainless steel Stainless steel with yellow gold PVD coating
<b>Bracelet</b>	Stainless steel bracelet with yellow gold PVD coating: 21mm Genuine calf leather strap: 21mm
<b>Crystal</b>	Domed sapphire crystal
<b>Water Resistance</b>	50 meters - 5 bar
<b>Dial</b>	Hand applied indices Small second at 6 o'clock
<b>Size</b>	Case diameter: 41mm Case thickness: 10.8mm
<b>Special Features</b>	Small second at 6 o'clock



56352.41.21



56352.41.51



56352.41.61



56357.41.51



56352.45.31



56357.45.31

*Atlantic Collection 2026*  
**Seacrest  
Classic Collection**



<b>Movement</b>	Quartz: Ronda 715
<b>Case Material</b>	Stainless steel Stainless steel with yellow gold PVD coating
<b>Bracelet</b>	Genuine calf leather strap: 22mm
<b>Crystal</b>	Domed sapphire crystal
<b>Water Resistance</b>	50 meters - 5 bar
<b>Dial</b>	Date display Hand applied indices
<b>Size</b>	Case diameter: 42mm Case thickness: 8.35mm
<b>Special Features</b>	Elegant and timeless design



50354.41.21



50354.41.51



50354.41.61



50354.45.21



50354.45.31

*Atlantic Collection 2026*  
**Seahunter  
Classic Collection**



<b>Movement</b>	Quartz: Ronda 715
<b>Case Material</b>	Stainless steel
<b>Bracelet</b>	Genuine calf leather strap: 22mm Integrated stainless steel bracelet: 22mm
<b>Crystal</b>	Sapphire crystal
<b>Water Resistance</b>	100 meters - 10 bar
<b>Dial</b>	Date display between 4 and 5 o'clock Hand applied indices
<b>Size</b>	Case diameter: 40mm Case thickness: 8.6mm
<b>Special Features</b>	Sporty design in brushed and polished stainless steel



71360.41.21



71360.41.51



71360.41.61



71365.41.21



71365.41.51



71365.41.61

*Atlantic Collection 2026*  
**Seapair**  
**Gents & Ladies Collection**



<b>Movement</b>	Quartz gents: Ronda 715 Quartz ladies: Ronda 763
<b>Case Material</b>	Stainless steel Stainless steel with yellow gold PVD coating
<b>Bracelet</b>	Stainless steel bracelet: gents 21mm / ladies 14mm Stainless steel in two tone with yellow gold PVD coating: 21mm & 14mm Stainless steel with yellow gold PVD coating: 21mm & 14mm Genuine calf leather strap: 21mm
<b>Crystal</b>	Sapphire crystal
<b>Water Resistance</b>	30 meters - 3 bar
<b>Dial</b>	Date display at 3 o'clock 60335.41.51 with engraved structure 20335.41.21 & 20335.45.21 with engraved structure and zirkonia stones Ladies models with mother-of-pearl dial and/or genuine diamonds
<b>Size</b>	Case diameter: gents 42mm / ladies 28.5mm Case thickness: gents 9mm / ladies 8mm
<b>Special Features</b>	Matching couple models



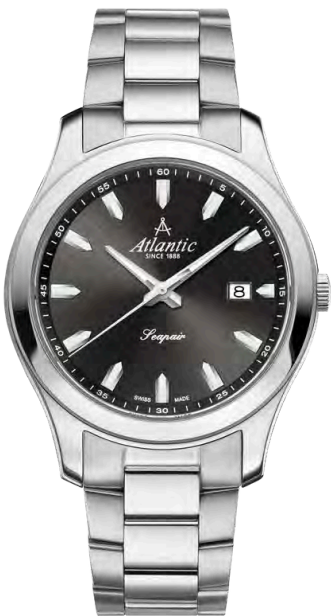
60330.41.69



60335.41.29



60335.41.59



60335.41.69



60335.41.51



60335.41.61



60330.45.69



60335.45.69





20335.41.01



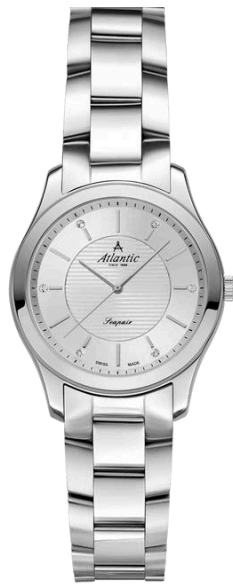
20335.41.01BK



20335.41.07



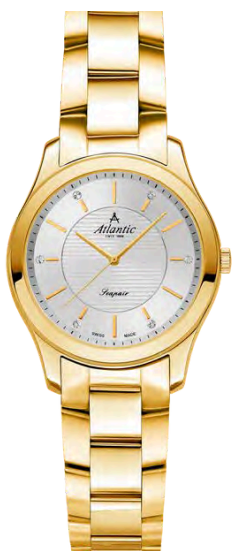
20335.41.07BK



20335.41.21



20335.41.91PK



20335.45.21



20335.45.31



20335.45.07



20335.45.37

*Atlantic Collection 2026*  
**Seabase**  
**Quartz Chronograph Edition**



<b>Movement</b>	Quartz chronograph: Ronda 3520.D
<b>Case Material</b>	Stainless steel Stainless steel with yellow gold PVD coating
<b>Bracelet</b>	Genuine calf leather strap: 22mm Stainless steel bracelet: 22mm Stainless steel bracelet in two tone with yellow gold PVD coating: 22mm
<b>Crystal</b>	Sapphire crystal
<b>Water Resistance</b>	50 meters - 5 bar
<b>Dial</b>	Date display Hand applied indices or roman numerals Chronograph dial
<b>Size</b>	Case diameter: 42mm Case thickness: 10mm
<b>Special Features</b>	Sporty quartz chronograph



64452.41.51R



64452.41.61



64452.41.61R



64457.41.51



64457.41.61





64452.41.58



64452.41.68



64452.45.58



64457.41.58



64457.41.68



64457.43.58G

*Atlantic Collection 2026*  
**Seabase**  
**Gents & Ladies Quartz Collection**



<b>Movement</b>	Quartz gents: Ronda 515 Quartz ladies: Ronda 775
<b>Case Material</b>	Stainless steel Stainless steel with yellow gold PVD coating
<b>Bracelet</b>	Stainless steel bracelet: 20mm & 14mm Stainless steel bracelet with yellow gold PVD coating: 20mm & 14mm Stainless steel bracelet in two tone with yellow gold PVD coating: 20mm Genuine calf leather strap: 20mm & 14mm
<b>Crystal</b>	Sapphire crystal
<b>Water Resistance</b>	50 meters - 5 bar
<b>Dial</b>	Date display Hand applied indices or roman numerals Chronograph dial
<b>Size</b>	Case diameter: 40mm resp. 27.5mm Case thickness: 8mm resp. 7.2mm
<b>Special Features</b>	Timeless design for ladies and gents to suit any taste and any occasion



60343.41.11



60343.41.13



60343.41.21



60343.41.51



60343.41.61



60348.41.21



60348.41.51



60348.41.61



60343.43.21



60343.43.31



60343.45.21



60343.45.31



60343.45.61



60343.45.91



60348.43.21



60348.43.31



60348.43.61



60348.45.21



60348.45.31



60348.45.61



60348.45.91



Atlantic  
SINCE 1888

Seabase

SWISS MADE

Atlantic  
SINCE 1888

Seabase

SWISS MADE

8



20343.43.21



20343.45.21



20348.41.21



20348.45.21

*Atlantic Collection 2026*  
**Sealine**  
**Quartz Chronograph Edition**



<b>Movement</b>	Quartz chronograph: ETA G10.212
<b>Case Material</b>	Stainless steel Stainless steel with yellow gold PVD coating
<b>Bracelet</b>	Stainless steel bracelet: 24mm Stainless steel bracelet with yellow gold PVD coating: 24mm Genuine calf leather strap: 24mm
<b>Crystal</b>	Sapphire crystal
<b>Water Resistance</b>	50 meters - 5 bar
<b>Dial</b>	Date display Hand applied indices Luminous hands and indices Chronograph dial
<b>Size</b>	Case diameter: 44mm Case thickness: 12.6mm
<b>Special Features</b>	Sporty and elegant quartz chronograph



62450.41.21



62450.41.51



62450.41.61



62455.41.51



62455.41.61



62450.45.31



62450.45.51



62455.45.51



62455.45.31

*Atlantic Collection 2026*  
**Super De Luxe  
Diamonds Edition**



<b>Movement</b>	Quartz: Ronda 705
<b>Case Material</b>	Stainless steel Stainless steel with yellow gold PVD coating
<b>Bracelet</b>	Milanese mesh bracelet in stainless steel: 18mm Milanese mesh bracelet with yellow gold PVD coating: 18mm
<b>Crystal</b>	Curved and domed sapphire crystal
<b>Water Resistance</b>	50 meters - 5 bar
<b>Dial</b>	8 genuine diamonds Date display Hand applied indices
<b>Size</b>	Case diameter: 36mm Case thickness: 7.8mm
<b>Special Features</b>	Dial with 8 genuine diamonds Diamond certificate



29355.41.27R



29355.45.27



29355.45.37

## *The Luxurious Statement Piece*

The Atlantic Super De Luxe Diamonds Edition is the perfect combination between a watch and an elegant piece of jewellery.



*Atlantic Collection 2026*  
**Super De Luxe  
Precious Stones Edition**



<b>Movement</b>	Quartz: Ronda 705
<b>Case Material</b>	Stainless steel Stainless steel with yellow gold PVD coating
<b>Bracelet</b>	Milanese mesh bracelet in stainless steel: 18mm Milanese mesh bracelet with yellow gold PVD coating: 18mm Genuine calf leather strap: 18mm
<b>Crystal</b>	Curved and domed sapphire crystal
<b>Water Resistance</b>	50 meters - 5 bar
<b>Dial</b>	Genuine sapphires or precious stones Date display Hand applied indices
<b>Size</b>	Case diameter: 36mm Case thickness: 7.8mm
<b>Special Features</b>	Dial with genuines sapphires or colourful genuine precious stones Precious stones certificate



29355.41.27



29355.41.29MB



29355.41.29LBU



29355.41.29LGN



29355.41.29LRD



*Atlantic*

*Super De Luxe*

SWISS MADE

18



29355.45.29MB



29355.45.29LBU



29355.45.29LCM



29355.45.29LRD



*Atlantic Collection 2026*  
**Elegance**  
**Royal Diamonds & Rubies Collection**



<b>Movement</b>	Quartz: Ronda 762
<b>Case Material</b>	Stainless steel Stainless steel with yellow gold PVD coating Stainless steel with rose gold PVD coating
<b>Bracelet</b>	Milanese mesh bracelet in stainless steel: 14mm Milanese mesh bracelet with yellow gold PVD coating: 14mm Milanese mesh bracelet with rose gold PVD coating: 14mm Genuine calf leather strap: 14mm
<b>Crystal</b>	Sapphire crystal
<b>Water Resistance</b>	30 meters - 3 bar
<b>Dial</b>	Mother-of-pearl dial with genuine diamonds or rubies Sunray pattern with genuine diamonds
<b>Size</b>	Case diameter: 33mm Case thickness: 8.1mm
<b>Special Features</b>	Elegant mother-of-pearl dial with genuine diamonds or rubies Diamonds resp. rubies certificate



29044.45.07G



29044.41.07RMB



29044.44.07RMB



29044.45.07GMB



29044.41.09



29044.41.09MB





29044.41.67



29044.44.57



29044.45.37



29044.41.67MB



29044.44.57MB



29044.45.37MB

*Atlantic Collection 2026*  
**Elegance Belle  
Collection**



<b>Movement</b>	Quartz: Ronda R1062
<b>Case Material</b>	Stainless steel Stainless steel with rose gold PVD coating
<b>Bracelet</b>	Stainless steel Stainless steel with rose gold PVD coating Genuine calf leather strap
<b>Crystal</b>	Sapphire crystal
<b>Water Resistance</b>	50 meters - 5 bar
<b>Dial</b>	Classic with roman numerals Mother-of-pearl with Swarovski cubic zirconia stones
<b>Size</b>	Rectangular case: 25x30mm Case thickness: 7mm
<b>Special Features</b>	Highly elegant, luxurious and timeless design



30040.41.09RL



30040.44.09L



30040.41.18MB



30040.41.09RMB



30040.44.18MB



30040.44.09MB

*Atlantic Collection 2026*  
**Elegance Nightsky**  
**Moonphase Aventurine**



<b>Movement</b>	Quartz: ETA F05.841
<b>Case Material</b>	Stainless steel Stainless steel with yellow or rose gold PVD coating
<b>Bracelet</b>	Milanese mesh bracelet in stainless steel Milanese mesh bracelet with yellow or rose gold PVD coating Genuine calf leather strap
<b>Crystal</b>	Sapphire crystal
<b>Water Resistance</b>	30 meters - 3 bar
<b>Dial</b>	Aventurine stone dial with Swarovski cubic zirconia stones Moonphase complication
<b>Size</b>	Case diameter: 32mm Case thickness 8.7mm
<b>Special Features</b>	Sparkly Aventurine stone dial with moonphase indication



30230.41.59L



30230.41.59MB



30230.44.59L



30230.44.59MB



30230.45.59L



30230.45.59MB

*Atlantic Collection 2026*  
**Elegance**  
**Classic Collection**



<b>Movement</b>	Quartz: Ronda 762
<b>Case Material</b>	Stainless steel Stainless steel with yellow gold PVD coating
<b>Bracelet</b>	Milanese mesh bracelet in stainless steel: 14 & 16mm Milanese mesh bracelet with yellow gold PVD coating: 14 & 16mm
<b>Crystal</b>	Sapphire crystal
<b>Water Resistance</b>	30 meters - 3 bar
<b>Dial</b>	Engraved pattern on models with indices Hand applied indices resp. dots
<b>Size</b>	Case diameter ref. 29035: 27mm Case diameter ref. 29036: 34mm Case thickness: 7.5mm resp. 7mm
<b>Special Features</b>	Highly elegant and timeless design



29035.41.21



29035.45.21



29035.45.31



29036.45.21L



29036.45.21MB



29036.45.31MB

*Atlantic Collection 2026*  
**Elegance**  
**Romantic Collection**



<b>Movement</b>	Quartz: Ronda 763
<b>Case Material</b>	Stainless steel Stainless steel with yellow gold PVD coating Stainless steel with rose gold PVD coating
<b>Bracelet</b>	Milanese mesh bracelet in stainless steel: 14mm Milanese mesh bracelet with yellow gold PVD coating: 14mm Milanese mesh bracelet with rose gold PVD coating: 14mm
<b>Crystal</b>	Sapphire crystal
<b>Water Resistance</b>	30 meters - 3 bar
<b>Dial</b>	Outer ring with zirkonia stones
<b>Size</b>	Case diameter: 34mm Case thickness: 7.8mm
<b>Special Features</b>	Feminine elegant timepiece made of high quality materials



29039.41.29MB



29039.41.69MB



29039.44.79MB



29039.45.39MB

## *Elegance and Sparkle*

The stunning design with added Zirconia stones in different sizes is a reminder of the romantic and delicate pleasures of life.



*Atlantic Collection 2026*  
**Elegance**  
**Moonphase Collection**



<b>Movement</b>	Quartz: ETA F05.841
<b>Case Material</b>	Stainless steel Stainless steel with yellow gold PVD 2N coating Stainless steel with rose gold PVD 5N coating
<b>Bracelet</b>	Genuine calf leather strap: 14mm Milanese mesh bracelet: 14mm
<b>Crystal</b>	Sapphire crystal
<b>Water Resistance</b>	30 meters - 3 bar
<b>Dial</b>	Moonphase indicator Sunbrushed pattern Hand applied indices resp. zirconia stones Date display
<b>Size</b>	Case diameter: 32mm Case thickness: 8.7mm
<b>Special Features</b>	Moonphase complication



29040.41.67L



29040.41.27MB



29040.41.57MB



29040.41.67MB



29040.41.21RMB



29040.44.21MB



29040.45.21MB



29040.45.31MB

*Atlantic Collection 2026*  
**Seagold  
Gold Collection**



<b>Movement</b>	Automatic: Sellita SW200-1 Power reserve: 38-41h Quartz Gents: Ronda 715
<b>Case Material</b>	Solid Gold 14ct.
<b>Bracelet</b>	Genuine calf leather strap
<b>Crystal</b>	Sapphire crystal
<b>Dial</b>	Hand applied indices Date display
<b>Size</b>	Case diameter: 40mm Case thickness automatic: 9.2mm Case thickness quartz: 6.2mm
<b>Special Features</b>	Luxurious and elegant timepieces in solid gold Automatic models with transparent caseback



95744.65.11 | Automatic



95744.65.31 | Automatic



95344.65.11 | Quartz



95344.65.31 | Quartz



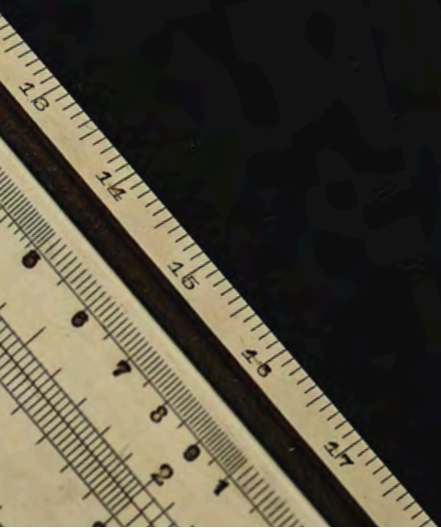
[Ariston  
[Ariston  
[Ariston] Fabbrica d'orologi  
que de fabrique et de com  
produits horlogers, montres, mouvements  
de montres, parties de montres, étuis de  
s'y rapportant.

Worldmaster



Mattioli, Dir  
ogère suisse, La  
uille Officielle Suisse d  
É.C. 1955

résultant de l'en  
pour du dépôt de la  
du renouvellement  
de la marque peut, en  
ême durée. Si le renouvellem  
tion antérieure, l'enregistrement est



# *Atlantic Watches*

## **The Materials**

### **Stainless Steel 316L**

Atlantic uses premium-grade stainless steel from the 316L family for all components. This material is renowned for its exceptional corrosion resistance and durability. It is the same grade of stainless steel used in the medical field for implants and instruments, ensuring reliability and longevity.

### **Titanium**

Titanium, a metallic element found in the Earth's crust, is 30% stronger and 50% lighter than steel when hardened. It is hypoallergenic, as it contains no nickel, and is 100% recyclable. Upon exposure to the atmosphere, titanium forms a protective oxide layer, making it highly resistant to saltwater corrosion.

### **Solid Gold**

Atlantic also uses solid gold in select watch models to emphasize luxury and timeless elegance. Genuine gold is not only prized for its rich, lustrous appearance but also for its corrosion resistance and non-reactive nature. The use of solid gold ensures unparalleled prestige and value in every timepiece.

### **Galvanic Coatings**

Applied through electrolysis, galvanic coatings allow for precise control of thickness and composition by adjusting timing and current intensity. This process creates layers of metals like gold or rose gold, offering luxurious finishes and long-lasting quality.

### **PVD (Physical Vapour Deposition) Coating**

Performed under vacuum conditions, PVD involves the deposition of microscopic particles onto surfaces through ion bombardment. This process creates impurity-free, ultra-thin layers of materials such as nitrides and carbides. PVD coatings are highly resistant to corrosion, extremely durable, hypoallergenic, and available in a variety of colors.

### **Sapphire Crystal**

Sapphire crystal is crafted from aluminum oxide ( $\text{Al}_2\text{O}_3$ ). Transparent and colorless, it is nearly impervious to scratches and can only be cut or scratched by a diamond. Its extreme hardness makes it resistant to wear, distortion, and chemical damage. Highly polished sapphire crystal ensures perfect transparency for an unobstructed view.



# *Atlantic Collection 2026*

## **Index of References**

<b>Reference</b>	<b>Page</b>	<b>Reference</b>	<b>Page</b>
20335	95	56352	87
20343	105	56357	87
20348	105	56550	85
29035	123	56555	85
29036	123	58366	63
29039	125	58466	65
29040	127	60330	93
29044	115-117	60335	93
29355	109-113	60343	101-103
30040	119	60348	101-103
30230	121	62450	107
39365	67	62455	107
50354	89	64452	97-99
51651	51	64457	97-99
51752	51-53	70351	79
52759	39-41	70356	79
52780	29	70362	75-77
52781	31	70462	75-77
52782	33	70467	75-77
52783	35	71360	91
52788	35	71365	91
52851	11	73361	71
52852	25	73366	73
52857	25	73370	69
52952	21-23	73375	69
52953	19	81371	57
53680	49	81376	57
53760	45	81576	57
53780	49	81771	55
53781	27	81776	55
53782	47	87461	81-83
53786	27	87466	81-83
55463	59/61	95344	129
55468	61	95744	129
55750	43		
55853	13-17		

# *Atlantic Watches*

## **Reference Structure**

Atlantic watch references are systematically arranged by collection for easy understanding and quick identification by sales teams, with some exceptions.

This guide explains how to interpret them.

### **Example:**

**52951.41.21RM**

**ABCDE.FG.HIJK**

### **A + B - Product lines**

10-49 Ladies collections

50-89 Gents collections

90-99 Special collections

### **C - Movements**

0 Quartz (hm)

1 Quartz (hm, date)

2 Quartz (hms)

3 Quartz (hms, date)

4 Quartz chronograph

5 Quartz special version

6 Handwinding (hms, date)

7 Automatic (hms, date)

8 Automatic chronograph

9 Handwinding special version

### **D - Crystals and water resistance**

1 Mineral crystal for Elegance (30 meters water resistant)

2 Mineral crystal for Elegance (50 meters water resistant)

3/4 Sapphire crystal (30 meters water resistant)

5/8 Sapphire crystal (50 meters water resistant)

6 Sapphire crystal (100 meters water resistant)

7 Sapphire crystal (200 meters water resistant)

9 Crystal special version

### **E - Straps and bracelets**

0-4 Leather straps

5-9 Metal bracelets

# *Atlantic Watches*

## **Reference Structure**

### **F + G - Metals**

- 11 Titanium
- 13 Titanium two-tone
- 41 Stainless steel
- 42 Stainless steel
- 43 Stainless steel two-tone yellow or rose gold PVD
- 44 Stainless steel rose gold PVD
- 45 Stainless steel yellow gold PVD
- 46 Stainless steel black PVD
- 47 Stainless steel two-tone black plated
- 65 14 carat gold

### **H - Dials**

- 1 White
- 2 Silver
- 3 Champagne
- 4 Anthracite
- 5 Blue
- 6 Black
- 7 Copper, Green
- 8 Choco
- 9 Cream, special version
- 0 Mother of pearl

### **I - Indexes**

- 1 Indexes, arrows
- 3 Arabic numerals
- 5 Indexes and arabic numerals
- 7 Stones / Dots
- 8 Roman numerals and mixed
- 9 Special version

### **J + K - Additional informations indexes and bracelets**

- G Yellow gold indexes
- L Leather strap (Elegance)
- R Rose gold indexes
- S Steel indexes
- GM Yellow gold indexes and two-tone yellow gold bracelet
- MB Metal bracelet (Elegance)
- RM Rose gold indexes and two-tone rose gold bracelet
- SM Steel indexes and steel bracelet
- PU PU band

Atlantic Watch Production Ltd. | Solothurnstrasse 44 | CH-2543 Lengnau | Switzerland

**Phone:** +41 (0)32 625 18 88 | **Email:** [info@atlanticwatches.ch](mailto:info@atlanticwatches.ch)

**[atlanticwatches.ch](http://atlanticwatches.ch)**